

AVK TALBOT PUSHFIT



**TALBOT PUSHFIT
FITTINGS FOR WATER PIPES**

Expect... **AVK**



TALBOT PUSHFIT - FITTINGS FOR WATER PIPE

The Talbot Pushfit connection is a tried and tested method of connecting low, medium and high density metric polyethylene water pipe ranging from Ø 16mm to Ø 63mm.

BENEFITS

User Friendly

The Talbot Pushfit fitting is quick and easy to use with no nuts to leave undone, just chamfer the pipe and push it into the fitting.

Stronger Than The Pipe

The fittings grip and seal on the pipe increases with water pressure and tensile load. This means that the PE pipe will burst or break before the connection fails. The Talbot Pushfit fitting is pressure rated PN 16.

Tough and Robust

Talbot Pushfit fittings are manufactured from quality materials providing resistance to distortion and cracking also providing for a strong threaded connection.

Adaptors from Imperial to Metric pipe

For special applications AVK offers adaptors converting from imperial to metric sizes.



HIGH PERFORMANCE MATERIALS

TECHNICAL DATA

Pressures: Working: 16 bar Test: 24 bar.

The pressures stated above apply with water temperatures up to 20°C.

Temperature increases may affect the installed life of the product.



Talbot Pushfit fittings can be supplied to meet the applicable performance requirements of:

ISO 3458, 3459, 3501, 3503

WIS 4-23-04, WIS 4-32-11

All materials used for the Talbot Pushfit fitting, that come into contact with potable water are WRAS listed.

The Talbot Pushfit connection can be used with MDPE pipe of the following specifications:

BS EN 12201,-1,2,5, (BS 6730 & BS 6572)

DIN 66324-1:1992-09 (DIN 8072), DIN 8074 all series

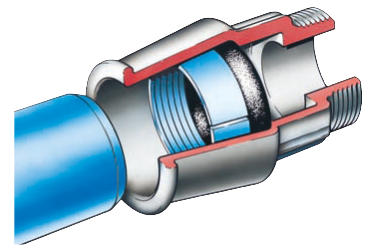
ISO 161 Parts I & II

WIS 4-32-03, WIS 4-32-13

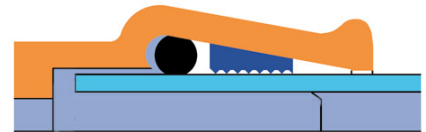
AS/NZS 4130

Please contact us to check compatibility of other PE pipes standart, including those complying to AWWA and ASTM standards

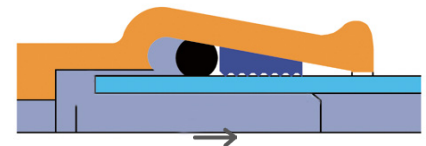
HOW TALBOT PUSHFIT WORKS



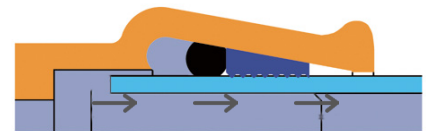
After insertion of the pipe, with the components at rest, the 'O' ring provides the water seal and the grip ring is ready to resist any pull out.



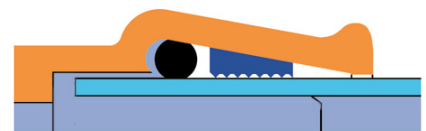
Water pressure forces the 'O' ring against the grip ring, pushing both components down the taper of the fitting creating an excellent pressure seal on the pipe.



As the water pressure rises the 'O' ring is forced further down the tapered body towards the grip ring, increasing the sealing pressure against the pipe and body.



In negative pressure conditions the 'O' ring remains in its original seating position and provides an effective vacuum seal.



PUSHFIT CONNECTIONS PRODUCT RANGE

SERIE TYPE 1907/10

Connectors PE x PE



AVK ref. no.	AVK ref. no. (Cap and liner included)	Pipe Ø (mm)	Bag Quantity
1907-016016-10-01		PE 0016x0016	5
1907-020020-10-01	1907-020020-10	PE 0020x0020	5
1907-025025-10-01	1907-025025-10	PE 0025x0025	5
1907-032032-10-01	1907-032032-10	PE 0032x0032	5
1907-040040-10-01	1907-040040-10	PE 0040x0040	1
1907-050050-10-01	1907-050050-10	PE 0050x0050	1
1907-063063-10-01	1907-063063-10	PE 0063x0063	1

SERIE TYPE 1907/15

Reducing Connectors
PE x PE



AVK ref. no.	AVK ref. no. (Cap and liner included)	Pipe Ø (mm)	Bag Quantity
1907-020016-15-01	1907-020016-15	PE 0020x0016	5
1907-025016-15-01	1907-025016-15	PE 0025x0016	5
1907-025020-15-01	1907-025020-15	PE 0025x0020	5
1907-032020-15-01	1907-032020-15	PE 0032x0020	5
1907-032025-15-01	1907-032025-15	PE 0032x0025	5
1907-040025-15-01	1907-040025-15	PE 0040x0025	1
1907-040032-15-01	1907-040032-15	PE 0040x0032	1
1907-050020-15-01	1907-050020-15	PE 0050x0020	1
1907-050025-15-01	1907-050025-15	PE 0050x0025	1
1907-050032-15-01	1907-050032-15	PE 0050x0032	1
1907-050040-15-01	1907-050040-15	PE 0050x0040	1
1907-063020-15-01	1907-063020-15	PE 0063x0020	1
1907-063025-15-01	1907-063025-15	PE 0063x0025	1
1907-063032-15-01	1907-063032-15	PE 0063x0032	1
1907-063040-15-01	1907-063040-15	PE 0063x0040	1
1907-063050-15-01	1907-063050-15	PE 0063x0050	1

SERIE TYPE 1907/20

Adaptors, Pushfit
PE x Copper Table X



AVK ref. no.	AVK ref. no. (Cap and liner included)	Pipe Ø (mm)	Bag Quantity
1907-020015-20-01	1907-020015-20	PE 0020x0015 COPPER	5
1907-025015-20-01	1907-025015-20	PE 0025x0015 COPPER	5
1907-025022-20-01	1907-025022-20	PE 0025x0022 COPPER	5

SERIE TYPE 1907/21

Adaptors, Pushfit
PE x Male Threaded



AVK ref. no.	AVK ref. no. (Cap and liner included)	Pipe Ø (mm)	Bag Quantity
1907-016012-21-01		PE 0020x1/2" MALE BSP	5
1907-020012-21-01	1907-020012-21	PE 0020x1/2" MALE BSP	5
1907-020034-21-01	1907-020034-21	PE 0020x3/4" MALE BSP	5
1907-025012-21-01	1907-025012-21	PE 0025x1/2" MALE BSP	5
1907-025034-21-01	1907-025034-21	PE 0025x3/4" MALE BSP	5
1907-032012-21-01	1907-032012-21	PE 0032x1/2" MALE BSP	5
1907-032034-21-01	1907-032034-21	PE 0032x3/4" MALE BSP	5
1907-032100-21-01	1907-032100-21	PE 0032x1" MALE BSP	5
1907-032200-21-01	1907-032200-21	PE 0032x2" MALE BSP	1
1907-040114-21-01	1907-040114-21	PE 0040x1 1/4" MALE BSP	1
1907-040200-21-01	1907-040200-21	PE 0040x2" MALE BSP	1
1907-050112-21-01	1907-050112-21	PE 0050x1 1/2" MALE BSP	1
1907-050200-21-01	1907-050200-21	PE 0050x2" MALE BSP	1
1907-063200-21-01	1907-063200-21	PE 0063x2" MALE BSP	1

PUSHFIT CONNECTIONS PRODUCT RANGE

SERIE TYPE 1907/22

Tank Connectors
PE x Male Thread
(Complete with nut and washers)



AVK ref. no.	AVK ref. no. (Cap and liner included)	Pipe Ø (mm)	Bag Quantity
1907-025034-22-01	1907-025034-22	PE Ø025x3/4" MALE BSP	5

SERIE TYPE 1907/25

Adaptors, Pushfit
PE x Female Threaded



AVK ref. no.	AVK ref. no. (Cap and liner included)	Pipe Ø (mm)	Bag Quantity
1907-016012-25-01		PE Ø016x1/2" FEM.BSP TAP	5
1907-020012-25-01	1907-020012-25	PE Ø020x1/2" FEM.BSP TAP	5
1907-020034-25-01	1907-020034-25	PE Ø020x3/4" FEM.BSP TAP	5
1907-025034-25-01	1907-025034-25	PE Ø025x3/4" FEM.BSP TAP	5
1907-032012-25-01	1907-032012-25	PE Ø032x1/2" FEM.BSP TAP	5
1907-032034-25-01	1907-032034-25	PE Ø032x3/4" FEM.BSP TAP	5
1907-032100-25-01	1907-032100-25	PE Ø032x1" FEM.BSP TAP	5
	1907-050100-25	PE Ø050x1" FEM.BSP TAP	5
1907-050112-25-01	1907-050112-25	PE Ø050x1 1/2" FEM.BSP TAP	1
	1907-063112-25	PE Ø063x1 1/2" FEM.BSP TAP CAP/LIN	1
	1907-063114-25	PE Ø063x1 1/4" FEM.BSP TAP CAP/LIN	1
1907-063200-25-01		PE Ø063x2" FEM.BSP TAP	1

SERIE TYPE 1907/26

Adaptors, Pushfit
PE x Female Threaded



AVK ref. no.	AVK ref. no. (Cap and liner included)	Pipe Ø (mm)	Bag Quantity
1907-025012-26-01	1907-025012-26	PE Ø025x1/2" FEM.BSP PARA	5
1907-025034-26-01	1907-025034-26	PE Ø025x3/4" FEM.BSP PARA	5
1907-025100-26-01	1907-025100-26	PE Ø025x1" FEM.BSP PARA	5
1907-032034-26-01	1907-032034-26	PE Ø032x3/4" FEM.BSP PARA	5
1907-032100-26-01		PE Ø032x1" FEM.BSP PARA	5
1907-040100-26-01	1907-040100-26	PE Ø040x1" FEM.BSP PARA	1
1907-040112-26-01		PE Ø040x1 1/2" FEM.BSP PARA	1
1907-040114-26-01		PE Ø040x1 1/4" FEM.BSP PARA	1
1907-050112-26-01	1907-050112-26	PE Ø050x1 1/2" FEM.BSP PARA	1
1907-050200-26-01	1907-050200-26	PE Ø050x2" FEM.BSP PARA	1
1907-063200-26-01	1907-063200-26	PE Ø063x2" FEM.BSP PARA	1

SERIE TYPE 1907/27

PE x blind



AVK ref. no.	AVK ref. no. (Cap and liner included)	Pipe Ø (mm)	Bag Quantity
1907-020000-27-01	1907-020000-27	STOP END PE Ø020	5
1907-025000-27-01	1907-025000-27	STOP END PE Ø025	5
1907-032000-27-01	1907-032000-27	STOP END PE Ø032	5
1907-040000-27-01	1907-040000-27	STOP END PE Ø040	1
1907-050000-27-01	1907-050000-27	STOP END PE Ø050	1
1907-063000-27-01	1907-063000-27	STOP END PE Ø063	1

PUSHFIT CONNECTIONS PRODUCT RANGE

SERIE TYPE 1907/28

PE x female parallel
thread



AVK ref. no.	AVK ref. no. (Cap and liner included)	Pipe Ø (mm)	Bag Quantity
1907-020012-28-01	1907-020012-28	PE Ø020x1/2" FEM.BSP	5
1907-020034-28-01	1907-020034-28	PE Ø020x3/4" FEM.BSP	5
1907-025012-28-01	1907-025012-28	PE Ø025x1/2" FEM.BSP	5
1907-025034-28-01	1907-025034-28	PE Ø025x3/4" FEM.BSP	5
1907-032100-28-01	1907-032100-28	PE Ø032x1" FEM.BSP	5

SERIE TYPE 1907/30

Elbows (90°) - PE x PE



AVK ref. no.	AVK ref. no. (Cap and liner included)	Pipe Ø (mm)	Bag Quantity
1907-020020-30-01	1907-020020-30	PE Ø020xØ020	5
1907-025020-30-01	1907-025020-30	PE Ø025xØ020	5
1907-025025-30-01	1907-025025-30	PE Ø025xØ025	5
1907-032025-30-01	1907-032025-30	PE Ø032xØ025	5
1907-032032-30-01	1907-032032-30	PE Ø032xØ032	5
1907-040040-30-01	1907-040040-30	PE Ø040xØ040	1
1907-050050-30-01	1907-050050-30	PE Ø050xØ050	1
1907-063063-30-01	1907-063063-30	PE Ø063xØ063	1

SERIE TYPE 1907/40

Adaptors, Pushfit
PE x Female Threaded



AVK ref. no.	AVK ref. no. (Cap and liner included)	Pipe Ø (mm)	Bag Quantity
1907-020012-40-01	1907-020012-40	PE Ø020x1/2" FEM.BSP	5
1907-025012-40-01	1907-025012-40	PE Ø025x1/2" FEM.BSP	5
1907-025034-40-01	1907-025034-40	PE Ø025x3/4" FEM.BSP	5
1907-032100-40-01	1907-032100-40	PE Ø032x1" FEM.BSP	5

SERIE TYPE 1907/45

Elbows (90°)
PE x Male Thread



AVK ref. no.	AVK ref. no. (Cap and liner included)	Pipe Ø (mm)	Bag Quantity
1907-025034-45-01	1907-025034-45	PE Ø025x3/4" MALE BSP	5
1907-032100-45-01	1907-032100-45	PE Ø032x1" MALE BSP	5

SERIE TYPE 1907/46

Elbows (90°)
PE x Female Thread



AVK ref. no.	AVK ref. no. (Cap and liner included)	Pipe Ø (mm)	Bag Quantity
1907-020012-46-01	1907-020012-46	PE Ø020x1/2" FEM.BSP TAP	5
1907-025012-46-01	1907-025012-46	PE Ø025x1/2" FEM.BSP TAP	5
1907-025034-46-01	1907-025034-46	PE Ø025x3/4" FEM.BSP TAP	5
1907-032100-46-01	1907-032100-46	PE Ø032x1" FEM.BSP TAP	5
1907-050112-46-01	1907-050112-46-01	PE Ø050x1 1/2" FEM.BSP TAP	1
1907-063200-46-01	1907-063200-46	PE Ø063x2" FEM.BSP TAP	1

PUSHFIT CONNECTIONS PRODUCT RANGE

SERIE TYPE 1907/47

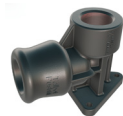
PE x female parallel
thread



AVK ref. no.	AVK ref. no. (Cap and liner included)	Pipe Ø (mm)	Bag Quantity
1907-020012-47-01	1907-020012-47	PE Ø020x1/2" FEM.BSP PARA	5
1907-025012-47-01	1907-025012-47	PE Ø025x1/2" FEM.BSP PARA	5
1907-025034-47-01	1907-025034-47	PE Ø025x3/4" FEM.BSP PARA	5
1907-032100-47-01	1907-032100-47	PE Ø032x1" FEM.BSP PARA	5
1907-050112-47-01		PE Ø050x1 1/2" FEM.BSP PARA	5
1907-063200-47-01	1907-063200-47	PE Ø063x2" FEM.BSP PARA	5

SERIE TYPE 1907/48

Wall Plate Elbows



AVK ref. no.	AVK ref. no. (Cap and liner included)	Pipe Ø (mm)	Bag Quantity
1907-020012-48-01	1907-020012-48	PE Ø020x1/2" FEM.BSP	5
1907-025012-48-01	1907-025012-48	PE Ø025x1/2" FEM.BSP	5
1907-025034-48-01	1907-025034-48	PE Ø025x3/4" FEM.BSP	5

All fittings are in plastic unless otherwise stated.

SERIE TYPE 1907/50

Tees, Equal
PE x PE x PE



AVK ref. no.	AVK ref. no. (Cap and liner included)	Pipe Ø (mm)	Bag Quantity
1907-016016-50-01		PE Ø016xØ016xØ016	5
1907-020020-50-01	1907-020020-50	PE Ø020xØ020xØ020	5
1907-025025-50-01	1907-025025-50	PE Ø025xØ025xØ025	5
1907-025025-50-01	1907-025025-50	PE Ø025xØ025xØ025	5
1907-032032-50-01	1907-032032-50	PE Ø032xØ032xØ032	5
1907-040040-50-01	1907-040040-50	PE Ø040xØ040xØ040	1
1907-050050-50-01	1907-050050-50	PE Ø050xØ050xØ050	1
1907-063063-50-01	1907-063063-50	PE Ø063xØ063xØ063	1

SERIE TYPE 1907/52

Tees, Un-Equal
PE x PE x PE



AVK ref. no.	AVK ref. no. (Cap and liner included)	Pipe Ø (mm)	Bag Quantity
1907-020032-52-01	1907-020032-52	PE Ø020xØ020xØ032	5
1907-025020-52-01	1907-025020-52	PE Ø025xØ025xØ020	5
1907-025032-52-01	1907-025032-52	PE Ø025xØ025xØ032	5
1907-032020-52-01	1907-032020-52	PE Ø032xØ032xØ020	5
1907-032025-52-01	1907-032025-52	PE Ø032xØ032xØ025	5
1907-322020-52-01	1907-322020-52	PE Ø032xØ020xØ020	5
	1907-322032-52	PE Ø032xØ020xØ032	5
1907-063025-52-01	1907-063025-52	PE Ø063xØ063xØ025	1
1907-063032-52-01	1907-063032-52	PE Ø063xØ063xØ032	1

PUSHFIT CONNECTIONS PRODUCT RANGE

SERIE TYPE 1907/55

Tees, Un-Equal
PE x PE x Female Taper
Thread



AVK ref. no.	AVK ref. no. (Cap and liner included)	Pipe Ø (mm)	Bag Quantity
1907-020012-55-01	1907-020012-55	PE Ø020xØ020x1/2" FEM.BSP TAP	5
1907-025012-55-01	1907-025012-55	PE Ø025xØ025x1/2" FEM.BSP TAP	5
1907-025034-55-01	1907-025034-55	PE Ø025xØ025x3/4" FEM.BSP TAP	5
1907-032100-55-01	1907-032100-55	PE Ø032xØ032x1" FEM.BSP TAP	5
1907-050112-55-01	1907-050112-55	PE Ø050xØ050x1 1/2" FEM.BSP TAP	1
1907-063200-55-01	1907-063200-55	PE Ø063xØ063x2" FEM.BSP TAP	1

SERIE TYPE 1907/56

PE x PE x female parallel
thread



AVK ref. no.	AVK ref. no. (Cap and liner included)	Pipe Ø (mm)	Bag Quantity
1907-050112-56-01		PE Ø050xØ050x1 1/2" FEM.BSP PARA	1
1907-063200-56-01		PE Ø063xØ063x2" FEM.BSP PARA	1

SERIE TYPE 1907/60

Grippa - The Universal
Service Adaptor



AVK ref. no.	AVK ref. no. (Cap and liner included)	Pipe Ø (mm)	Bag Quantity
1907-020012-60-01	1907-020012-60	PE Ø020x1/2" METAL	5
1907-020034-60-01	1907-020034-60	PE Ø020x3/4" METAL	5
1907-020038-60-01	1907-020038-60	PE Ø020x3/8" METAL	5
1907-025012-60-01	1907-025012-60	PE Ø025x1/2" METAL	5
1907-025034-60-01	1907-025034-60	PE Ø025x3/4" METAL	5
1907-025038-60-01	1907-025038-60	PE Ø025x3/8" METAL	5

SERIE TYPE 1907/70

Repair Connectors PE
x PE



AVK ref. no.	AVK ref. no. (Cap and liner included)	Pipe Ø (mm)	Bag Quantity
1907-020020-70-01	1907-020020-70	PE Ø020xØ020	5
1907-025025-70-01	1907-025025-70	PE Ø025xØ025	5
1907-032032-70-01	1907-032032-70	PE Ø032xØ032	5

SERIE TYPE 1907/81

Double Check Valve
PE x PE



AVK ref. no.	AVK ref. no. (Cap and liner included)	Pipe Ø (mm)	Bag Quantity
1907-020020-81-01	1907-020020-81	PE Ø020xØ020	5
1907-025025-81-01	1907-025025-81	PE Ø025xØ025	5

SERIE TYPE 1907/90

Extractors - Plastic



AVK ref. no.	Pipe Ø (mm)	Bag Quantity
1907-020000-90-01	PE Ø020 10 PACK	10 sets
1907-025000-90-01	PE Ø025 10 PACK	10 sets
1907-032000-90-01	PE Ø032 10 PACK	10 sets

PUSHFIT CONNECTIONS PRODUCT RANGE

SERIE TYPE 1907/91

Extractors - Metal



AVK ref. no.	Pipe Ø (mm)	Bag Quantity
1907-020000-91-01	PE Ø020	1 set
1907-025000-91-01	PE Ø025	1 set
1907-032000-91-01	PE Ø032	1 set
1907-040000-91-01	PE Ø040	1 set
1907-050000-91-01	PE Ø050	1 set
1907-063000-91-01	PE Ø063	1 set

SERIE TYPE 1907/93

Spare parts
PE - Grip Rings



AVK ref. no.	Pipe Ø (mm)	Bag Quantity
1907-016000-93-01	PE Ø016	10
1907-020000-93-01	PE Ø020	10
1907-025000-93-01	PE Ø025	10
1907-032000-93-01	PE Ø032	10
1907-040000-93-01	PE Ø040	5
1907-050000-93-01	PE Ø050	5
1907-063000-93-01	PE Ø063	5

SERIE TYPE 1907/94

Spare parts
PE - 'O' Rings



AVK ref. no.	Pipe Ø (mm)	Bag Quantity
1907-016000-94-01	PE Ø016	10
1907-020000-94-01	PE Ø020	10
1907-025000-94-01	PE Ø025	10
1907-032000-94-01	PE Ø032	10
1907-040000-94-01	PE Ø040	5
1907-050000-94-01	PE Ø050	5
1907-063000-94-01	PE Ø063	5

SERIE TYPE 1907/95

PE PIPE CHAMFER
TOOL 16mm- 63mm



AVK ref. no.	Pipe Ø (mm)	Bag Quantity
1907-020063-95-01	PE Ø020-063	1

SERIE TYPE 1907/96

SPARE BLADES
TOOL 16mm- 63mm



AVK ref. no.	Pipe Ø (mm)	Bag Quantity
1907-020063-96-01	PE Ø020-063 10 PACK	1 (10 pack)

PUSHFIT ASSEMBLY AND DISMANTLING INSTRUCTIONS

User experience indicates that Pushfit fittings cope better with adverse site conditions than compression fittings.

However if a connection failure occurs please check that:

- The pipe has been pushed fully in to the socket.
- Correct components have been used (grips/O-ring/PE pipe).
- The 'O' ring or the grip ring are not damaged.
- Pipe is not excessively scored at the sealing area.

PUSHFIT ASSEMBLY INSTRUCTIONS

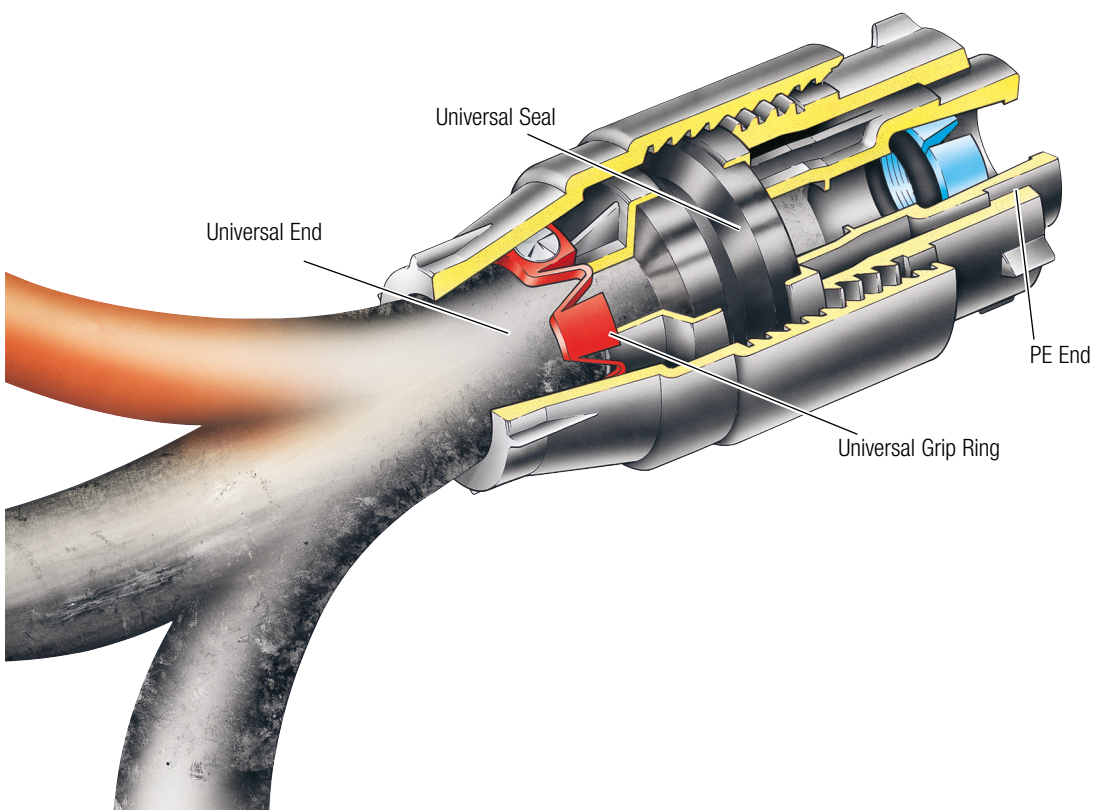
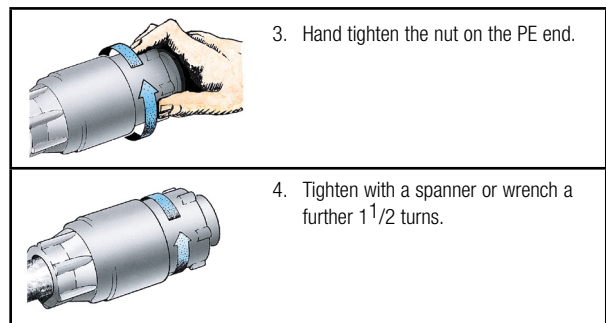
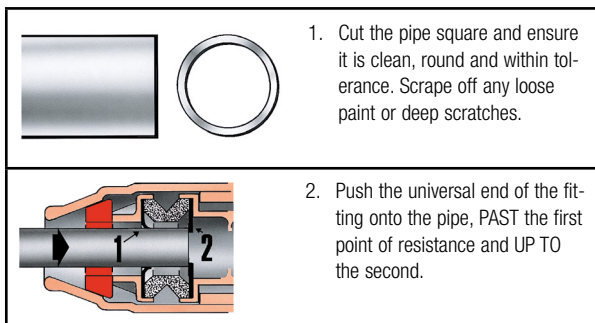
	1a. For fittings supplied with cap and liner (support bush) insert liner fully in to the pipe end.
	1b. For fitting without liner prep. pipe using chamfer tool.
	2. Push the pipe fully into the fitting with a slight twist.
	3. Ensure that the pipe passes two points of resistance and is fully seated.

PUSHFIT DISMANTLING INSTRUCTIONS

	1. Slide extractors home and withdraw the pipe.
	2. Extract the grip ring with a screwdriver. Do not re-use the grip ring.
	3. Extract and inspect the 'O' ring - replace it if damaged.
	4. Insert a new grip ring by forming a figure '6' and pressing it in.
	5. Ensure the grip ring is inserted the correct way round.

GRIPPA ASSEMBLY INSTRUCTIONS

Set out below are the assembly instructions for the universal end of the Grippa fitting. For instructions on how to assemble the Pushfit end of the connection please refer to the Pushfit assembly instructions shown above.



AVK Group
www.avkvalves.com
© 2022 AVK Group A/S

Expect... **AVR**